

# DNA STR DETECTION KIT PRODUCT CATALOG

**Jiangsu Superbio Biomedical (Nanjing) Co., Ltd.**

✉ **Email:** [info@superbio.cn](mailto:info@superbio.cn)

📍 **Address:** Room 1501, Block A, Zhongdan Ecological Life Science Industrial Park No.3-1, New Jinhu Road, Jiangbei New District, Nanjing, Jiangsu, China

# Company Introduction

---

Jiangsu Superbio Biomedical (Nanjing) Co., Ltd. (hereinafter referred to as "Superbio") was established in February 2016. Superbio has consistently focused on the independent research, development, and production of forensic DNA testing reagents and supporting products. By deeply integrating biological DNA technology with criminal investigation forensic techniques, Superbio aims to provide comprehensive DNA testing solutions. Targeting the DNA polymorphism detection and analysis application market, Superbio emphasizes the integration of relevant technologies and commercial resources to offer systematic solutions through research, development, production, sales, and service. This has led to the creation of a series of biological products applied in forensic DNA testing and analysis, public safety, criminal technology, judicial identification, scientific research, and other technological fields. Adhering to the principles of independent research and development, proprietary intellectual property, self-production, and self-service, Superbio is committed to becoming a premium service provider of forensic DNA testing system solutions.

Focusing on customer-centric values and the dedication of its employees, Superbio upholds a spirit of long-term, arduous effort and continuous learning and innovation.

**Customer-centric,  
Researcher oriented  
Persist in learning, innovation  
And long-term cultivation**

---



# Corporate Honors

Superbio's self-developed brand "YESU" DNA test kits have provided products, services, and solutions to numerous DNA laboratories across the country, including those in public security criminal investigation, judicial institutions, research institutions, biological companies, and blood centers. Additionally, Superbio has undertaken the task of building a database of tens of millions of samples and Y chromosome data for the public security system. The products are also exported to various overseas countries, including Spain, Turkey, Macedonia, Egypt, Saudi Arabia, Vietnam, Greece, India, Nigeria, Angola, and others, receiving widespread recognition and praise from both domestic and international customers.



# Y27Plex STR Detection Kit

Catalog No.A00013-A-100,100 Reactions/Box

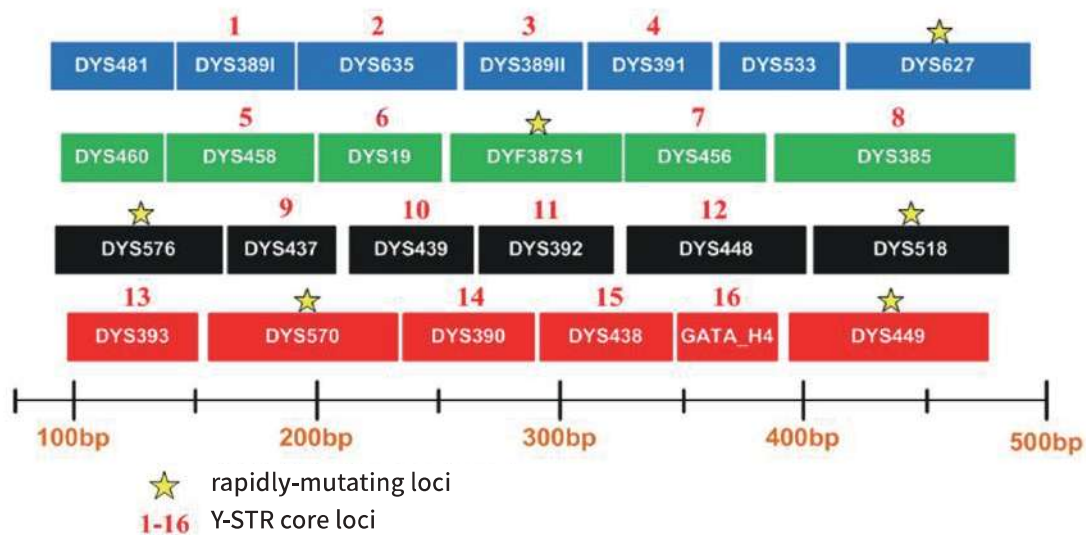
Five-Color Fluorescence Detection Platform, Multiplex Amplification Detecting 27 Y-Chromosome STR Loci

**27**  
Y-Chromosome  
STR Loci

**20**  
low-mutation-rate  
STR loci

**7**  
rapidly-mutating  
loci.

## A27Plex Loci Distribution Diagram



Ideal for male lineage investigation with strong individual identification capabilities.



Suitable for forensic analysis, kinship testing, and research in human genetic identification purposes.



DNA database building, including mainstream Y-chromosome STR database loci.



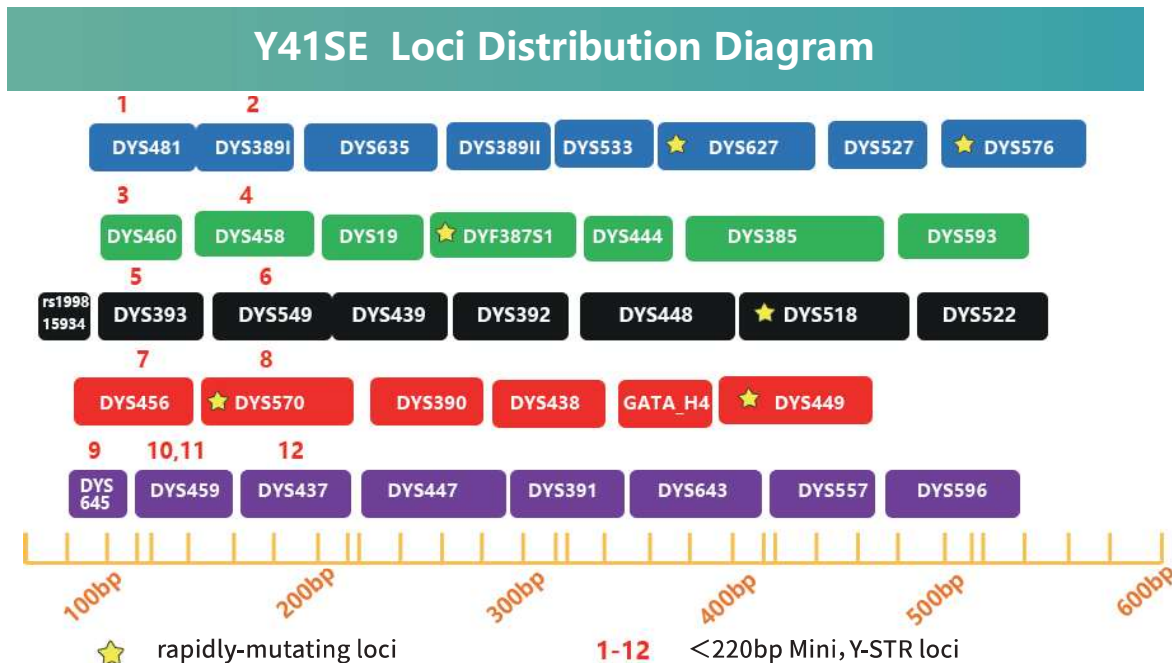
High compatibility with various sample types for both direct amplification and the amplification of purified DNA, enabling rapid amplification with an amplification time of less than 2 hours.



# Y41SE STR Detection Kit

Catalog No.A00025-200,200 Reactions/Box

Six-Color Fluorescence Detection Platform, Simultaneous Amplification of 40 Y-Chromosome STR Loci



## Fast and Efficient

Utilizes high-efficiency DNA polymerase, with a PCR reaction time as short as 70 minutes, significantly enhancing detection efficiency.



## Powerful Functionality

Fully meets the needs of cases, database construction, anti-trafficking efforts, and kinship testing.



## High Compatibility

Compatible with direct amplification of most samples and the amplification of purified DNA.



## Strong Individual Identification Capability

Suitable for Y-STR database construction, ideal for male lineage investigation, and offers strong individual identification capabilities. It includes all 35 loci that are mandatory and preferential in Y-STR database standards.

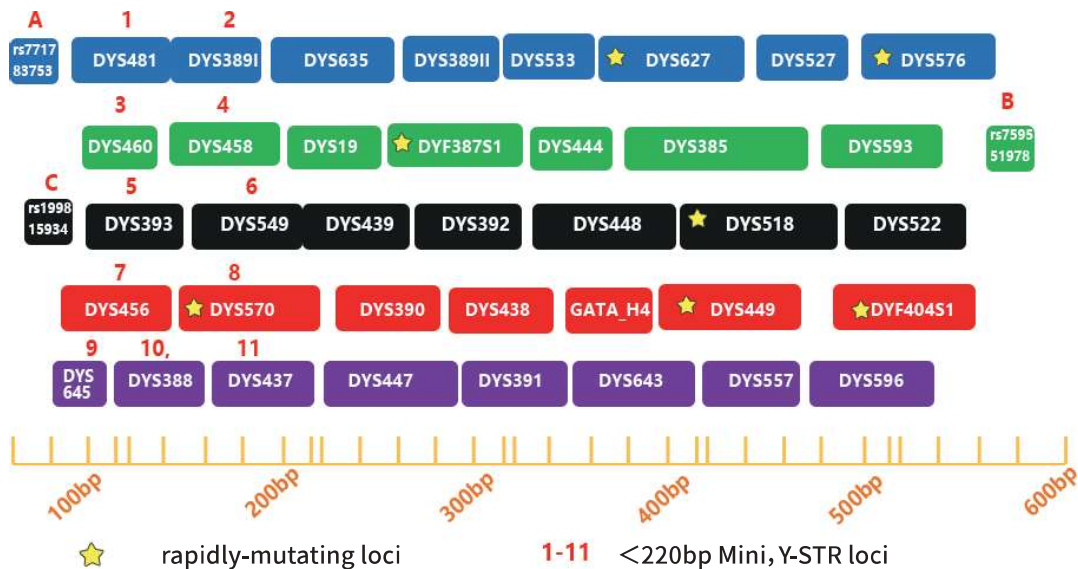
# Y44SE Plus STR Detection Kit

Catalog No.A00035-200,200 Reactions/Box

Six-Color Fluorescence Detection Platform, Simultaneous Amplification of 41 Y-Chromosome STR Loci



## Y44SE Plus Loci Distribution Diagram



### Six-Color Fluorescence Detection

The platform utilizes six-color fluorescence to simultaneously amplify 41 Y-chromosome STR loci.



### High Compatibility

Compatible with direct amplification of most samples and the amplification of purified DNA.



### Powerful Performance

Ideal for Y-STR database construction, suitable for male lineage investigation, and offers strong individual identification capabilities. It includes all 35 loci that are mandatory and preferential in Y-STR database standards.



### Direct Amplification Without Extraction

Enables direct amplification of bloodstains or saliva stains on filter paper or FTA cards without the need for template extraction and purification. It is also suitable for extracted DNA templates, with a very high sample detection rate.

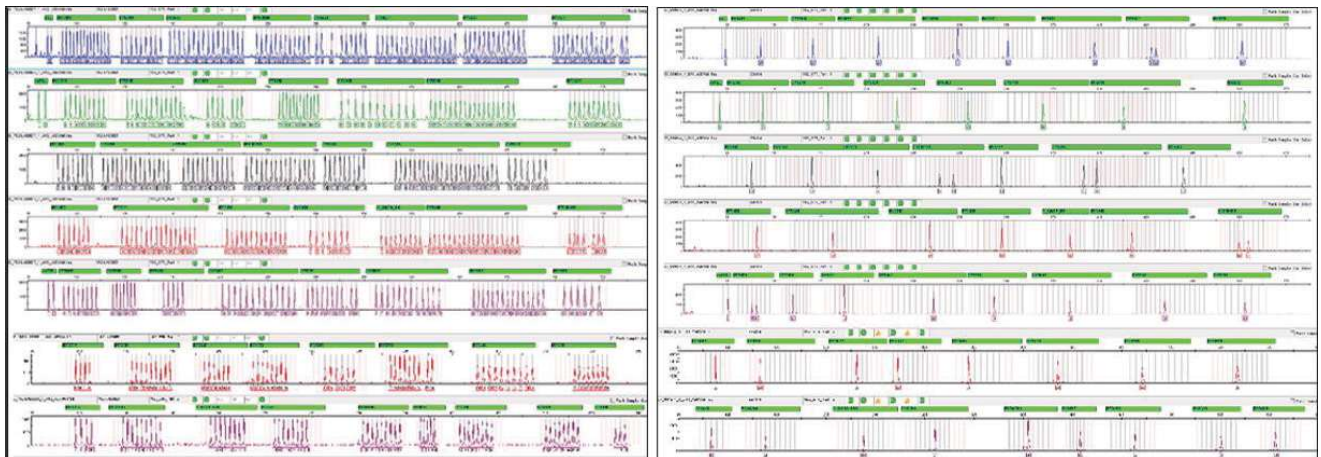
# Y62Plex STR Detection Kit

Catalog No.A00101-100,100 Reactions/Box

Based on the World's First 8-Color Fluorescence Resonance Energy Transfer Technology, Simultaneously Amplifies 62 Loci.



## Y62Plex Detection Results (Y62 Ladder Chart) (Positive Control with 9948 Image)



### Suitable for Degraded Samples

Can accommodate more loci within small fragments (300 bp or less), suitable for degraded samples.

### High Resolution

Obtains correct typing of 62 loci in a single reaction tube, with higher resolution than other similar products on the market.

### High Individual Identification Rate and Non-Paternity Exclusion Rate

Offers higher cumulative individual identification power and non-paternity exclusion rate. When used alone or in combination with other commercial kits, it provides rapid, high-resolution genetic testing products and technology for public security criminal investigation, forensic identification, and paternity testing.

### High Sensitivity

Optimized PCR buffer system provides higher sensitivity and stronger inhibition resistance, enhancing the detection rate of samples containing inhibitors, with a minimum detection limit of 50 pg.

**WORLD'S FIRST  
EIGHT-COLOR  
FLUORESCENCE  
TECHNOLOGY**

# Y-com STR Detection Kit

Catalog No.A00023-50,50 Reactions/Box

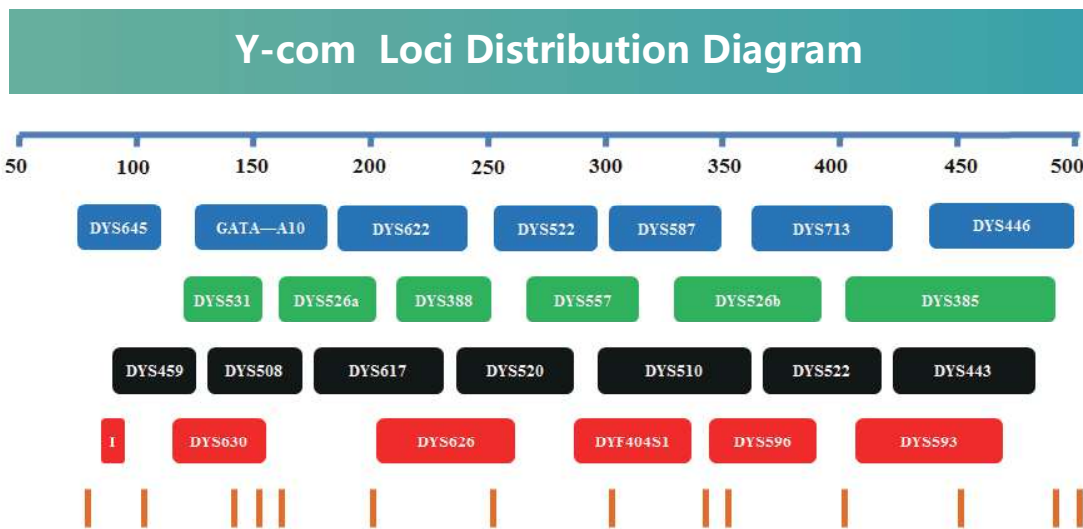
Five-Color Fluorescence Detection Platform, Multiplex Amplification Detecting 29 Human Y-Chromosome STR Loci

**29**  
Y-Chromosome  
STR Loci

**2**  
Core Y-STRs

**1**  
Insertion-Deletion  
Locus

**26**  
Non-Core Y-STRs



## Wide Range of Applications

Suitable for forensic individual identification, paternity testing, DNA genealogy construction, and lineage investigation.



## Used in Conjunction with Y41SE

When used together with Y41SE, it can detect 66 Y-STR loci.



## Excellent Specificity

Contains multiple exclusive genetic markers, offering better polymorphism and heterozygosity. It provides higher individual identification rates and non-paternity exclusion rates.



## Direct Amplification Without Extraction

Enables direct amplification of bloodstains or saliva stains on filter paper or FTA cards without the need for template extraction and purification.



# DNA STR DETECTION KIT PRODUCT CATALOG

**Jiangsu Superbio Biomedical (Nanjing) Co., Ltd.**

✉ **Email:** [info@superbio.cn](mailto:info@superbio.cn)

📍 **Address:** Room 1501, Block A, Zhongdan Ecological Life Science Industrial Park No.3-1, New Jinhu Road, Jiangbei New District, Nanjing, Jiangsu, China

# X31Plex STR Detection Kit

Catalog No.A00110-50,50 Reactions/Box

## 30

X-Chromosome Loci

## 1

Sex Locus

### 01

The kit uses six-color fluorescent labeling technology, with highly efficient fluorescent molecules (energy transfer) that provide high sensitivity.

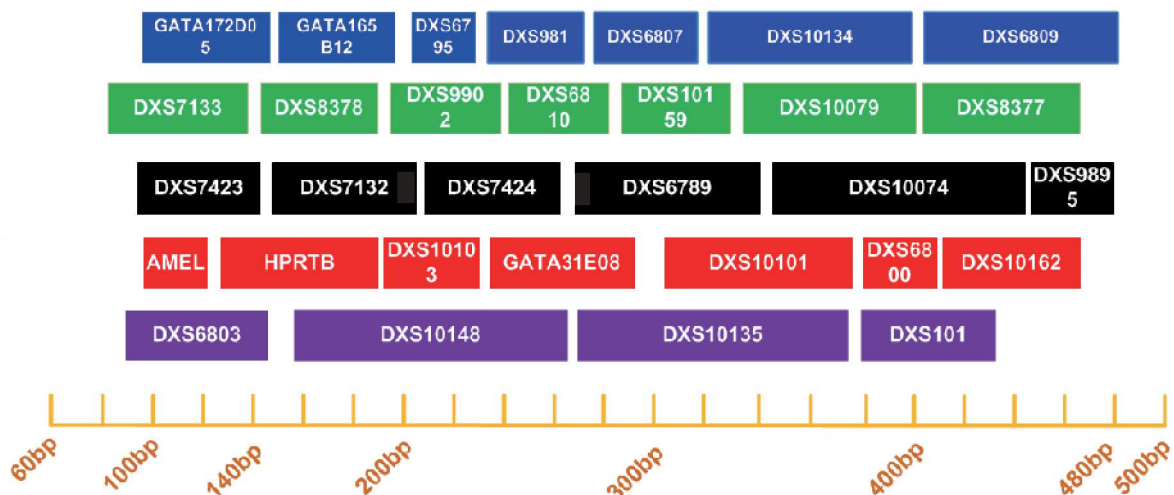
### 02

The selected loci have a high number of alleles, with evenly distributed common alleles. All loci are 4-5 nucleotide repeats, meeting the ideal conditions for forensic STR loci and suitable for STR-PCR multiplex amplification.

### 03

The design and selection of primers are highly specific, eliminating analytical errors due to homology. The entire set of primers is designed with uniform parameters to ensure consistent annealing temperatures, achieving amplification stability and balance. This allows for reproducible, sensitive, and parallel efficient amplification in multiplex PCR processes.

## X31Plex Loci Distribution Diagram



# Y44SE Plus STR Detection Kit (6 Colors Case Version)

Catalog No. A00109-A-100,100 Reactions/Box



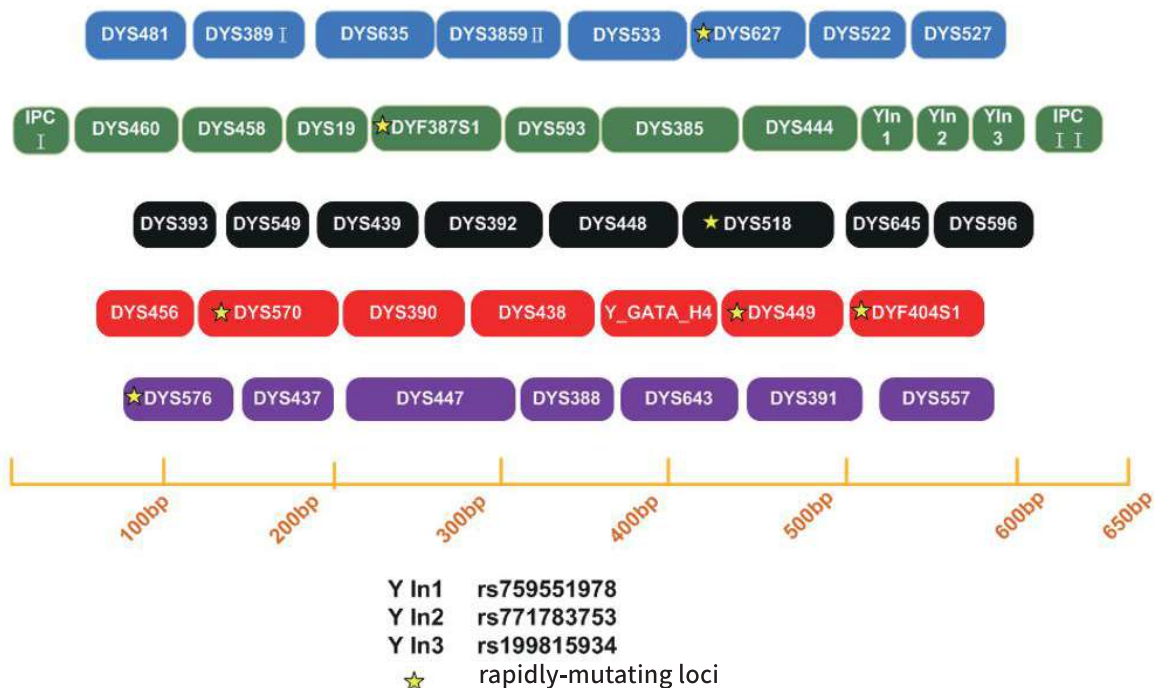
01

The kit provides information on 44 STR loci, simultaneously amplifying 32 low-mutation-rate Y-STR loci and 9 rapidly mutating Y-STR loci.

02

The kit can identify common biological samples from males, including blood, saliva, hair, semen, muscle, nails, cartilage ,etc., after extraction. It can also directly amplify FTA cards and saliva cards.

## Y44SE Plus (6 Colors Case Version) Loci Distribution Diagram





# SCIENCE TECHNOLOGY SERVES FOR PUBLIC SECURITY

**Jiangsu Superbio Biomedical (Nanjing) Co., Ltd.**

✉ **Email:** [info@superbio.cn](mailto:info@superbio.cn)

📍 **Address:** Room 1501, Block A, Zhongdan Ecological Life Science Industrial  
Park No.3-1, New Jinhu Road, Jiangbei New District, Nanjing, Jiangsu, China