

# VITROLIFE FOLLICLE ASPIRATION NEEDLES

Designed to deliver. Optimising aspiration time, control  
and patient comfort.



Vitrolife 



# THE OOCYTE - A VULNERABLE CELL THAT REQUIRES GENTLE HANDLING

The oocyte is the largest cell in the human body and is extremely vulnerable. Retrieving an oocyte exposes it to considerable stress, including transfer from the follicle, passage through the needle and tubing, and exposure to the laboratory environment. A needle that enables a fast and precise procedure will minimise stress, ensuring that the maximum number of intact oocytes can be retrieved to support a successful outcome.



# DESIGNED TO DELIVER

Optimising aspiration time, control and patient comfort.



## Reduced needle tip for optimised retrieval

The needle tip diameter is reduced to 20G without compromising aspiration time, control and oocyte safety.

Note! Only Sense needles have reduced needle tips



## Double sterile pack to meet surgical standards

Each needle is individually packaged in a double sterile barrier to avoid contamination in the operating theatre.



## Ultra sharp design for low penetration resistance and high precision

The unique V-Tip meets your needs by providing extraordinary sharpness, high precision and the utmost safety. It has a bevel grinding of 15 degrees to ensure low resistance penetration, and distinctive backpoint grinding to prevent deviation from the puncturing line.



## Vacuum tubing that suits you

To provide flexibility, we offer a wide range of vacuum pump tubings with a variety of connections.





## Colour coded labels

All needle labels are colour coded to simplify identification of needle types.



**MediSteel™**  
**PrecisionGrip™**

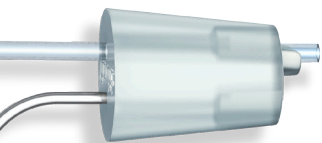
## Maximised control and precision for improved performance

All Vitrolife needles, including the handle and side connections, are made of surgical grade stainless steel. The MediSteel PrecisionGrip is specifically designed to ensure correct orientation and full control. The orientation of the bevel point is marked on the handle.



## Rigorously controlled for high reliability

Every Vitrolife needle is microscopically inspected to ensure there are no residues or other visible defects. Our needles are MEA tested.





# INDUSTRY LEADING QUALITY. ALL THE WAY.

To safeguard robust product performance, the Vitrolife quality control system covers both the manufacturing process and the aspiration needles. By ensuring consistent high quality, we help you to maximise your success rate.



**All needles are manufactured in a cleanroom where particle levels are thoroughly monitored daily.**



**We inspect every needle microscopically before release.**



**All needles are sterilised using a validated process that is verified regularly.**



**Our needles are guaranteed free from toxins, including endotoxins, from the environment and the materials used.**

To detect toxic materials, Vitrolife has developed a very sensitive 1-cell mouse embryo assay (MEA) that follows the development of single-cell mouse embryos to hatching blastocysts. This assay is far more sensitive than the widely used 2-cell MEA.



**LOT-to-LOT consistency is secured by adhering to rigorous validated specifications and protocols.**

The quality of each lot is certified by a signed protocol to guarantee traceability.



# Product list

Product	Description	Outer Diameter (mm)	(GAUGE)	Inner Diameter (mm)	Needle Length (mm)	Aspiration tubing (mm)	Flush tubing (mm)	Size	REF
Single lumen, reduced tip – Sense	Aspiration needle	1.4/0.9	17/20	1.2/0.6	300	600	-	10-pack	17175
					300	900	-	10-pack	17176
					350	600	-	10-pack	17177
					350	900	-	10-pack	17178
Single lumen, conventional tip	Aspiration needle	1.4	17	1.0	300	400	-	10-pack	17103
					300	600	-	10-pack	17107
					300	900	-	10-pack	17112
					330	900	-	10-pack	17125
					350	600	-	10-pack	17156
					350	900	-	10-pack	17130
Single lumen, conventional tip	Aspiration needle	1.6	16	1.1	300	600	-	10-pack	17116
					300	900	-	10-pack	17120
					350	600	-	10-pack	17157
					350	900	-	10-pack	17104
					350	400	-	10-pack	17145
Single lumen, conventional tip <sup>1</sup>	Aspiration needle	1.4	17	1.2	250	-	-	10-pack	17152
					300	-	-	10-pack	17140
					350	-	-	10-pack	17137
Single lumen, conventional tip <sup>2</sup>	Aspiration needle	1.6	16	1.1	350	600	-	10-pack	17123
Double lumen, conventional tip	Aspiration needle	1.5	17	0.9	350	600	600	10-pack	17151
					350	1000	1000	10-pack	17102
					250	400	400	10-pack	17150
					300	400	400	10-pack	17108
					300	400	900	10-pack	17131
					300	600	600	10-pack	17111
					300	900	900	10-pack	17105
					350	600	600	10-pack	17109
					350	900	600	10-pack	17148
					350	900	900	10-pack	17114
		1.65	16	1.0	350	1000	1000	10-pack	17168

1. The needle is equipped with a Luer-lock to connect a syringe.

2. The tubing fitted on the needle is equipped with a Luer-lock to connect a syringe.

## Accessories

Product	Description	Width (mm)	Length (mm)	Volume (mL)	Size	REF
Vacuum Pump Tubing	Male Luer connection and open end		180		10-pack	14205
	Female and male Luer connections		200		10-pack	14211
	Male and male Luer connections		200		10-pack	14212
Transducer Cover	Latex-free cover	70	800		25-pack	14201
		100	800		25-pack	14202
		150	800		25-pack	14204
Ultrasound Transmission Gel	Sterile contact gel			15	25-pack	14203
Oocyte collection tube	IVF certified collection tube			14	10 units/sleeve: 500/case	16101



PATENT NO: EP 2114270, NZ 579752, CN 200880014446.2, RU 2463977, JP 5342554, US application 12/532,362 pending.  
 Canadian Patent Application No. 2681165 based on International Application No. PCT/GB2008/000251 Sampling Needle.  
 Other patent applications pending. European Community Design Registration No 000994553.

# TOGETHER. ALL THE WAY™

## ORDERS & CUSTOMER SUPPORT

Contact your local sales representative for prices and availability. Orders can be placed through our website at [www.vitrolife.com](http://www.vitrolife.com). You can also contact us by email and phone:

### Sweden office

Phone: +46 31 721 81 00

Email: [order@vitrolife.com](mailto:order@vitrolife.com)

### Japan office

Phone: +81 03 6721 7240

Email: [japan@vitrolife.com](mailto:japan@vitrolife.com)

### US office

Phone: +1 866 848 7687

Email: [order.us@vitrolife.com](mailto:order.us@vitrolife.com)

### China office

Phone: +86 10 6403 6613

Email: [order.asia@vitrolife.com](mailto:order.asia@vitrolife.com)

### Australia office

Phone: +61 03 9329 1212

Email: [order.au@vitrolife.com](mailto:order.au@vitrolife.com)

## TECHNICAL SUPPORT

Chat with us at [www.vitrolife.com](http://www.vitrolife.com), or contact us at the following addresses:

Europe, Middle East & Africa:

[support@vitrolife.com](mailto:support@vitrolife.com)

Americas:

[support.us@vitrolife.com](mailto:support.us@vitrolife.com)

Asia:

[support@vitrolife.com](mailto:support@vitrolife.com)

All products in this brochure might not be available in all markets.

DISTRIBUTED BY

Vitrolife 

Vitrolife · Box 9080 · SE-400 92 Göteborg · Sweden · Tel +46 31 721 80 00 · Fax +46 31 721 80 90 · [fertility@vitrolife.com](mailto:fertility@vitrolife.com) · [www.vitrolife.com](http://www.vitrolife.com)

This brochure contains information regarding various tests and clinical trials relating to Vitrolife products. This information on tests and clinical trials relating to Vitrolife products is only a summary provided for information purposes about Vitrolife products. The information is provided "as is" without any warranties, expressed or implied, including but not limited to the implied warranties of suitability or eligibility for a particular purpose and/or success of treatment on an individual basis. Products and information may have changed since the printing of this brochure. For more information see [www.vitrolife.com](http://www.vitrolife.com).